

Ultralux 400 18W LED

Coughtrie

Custodial

Infrastructure

Our most robust and versatile bulkhead, available with a surface mounted (S) or semi-recessed base (R) and a variety of sensing options. Semi-recessed units can be supplied with a die-cast aluminium guard (RG), cowl (RC) or visor guard (RV).

Applications

- Cell Toilets and shower areas
- Stairwells
- Prison circulation areas
- Police stations
- Detention centres
- Schools
- Industrial
- Corridors
- Walkways



Features

- Die-cast aluminium base
- Clear or opal prismatic UV stabilised fire retardant polycarbonate diffuser
- SA770 low smoke low toxicity silicone elastomer
- IP65
- IK10

Options

- Black, Grey or White
- Integrated 3hr emergency & optional self-test
- Digital Dimmable Ballast
- Microwave
- Dusk to Dawn
- Security screws included for added vandal resistance *

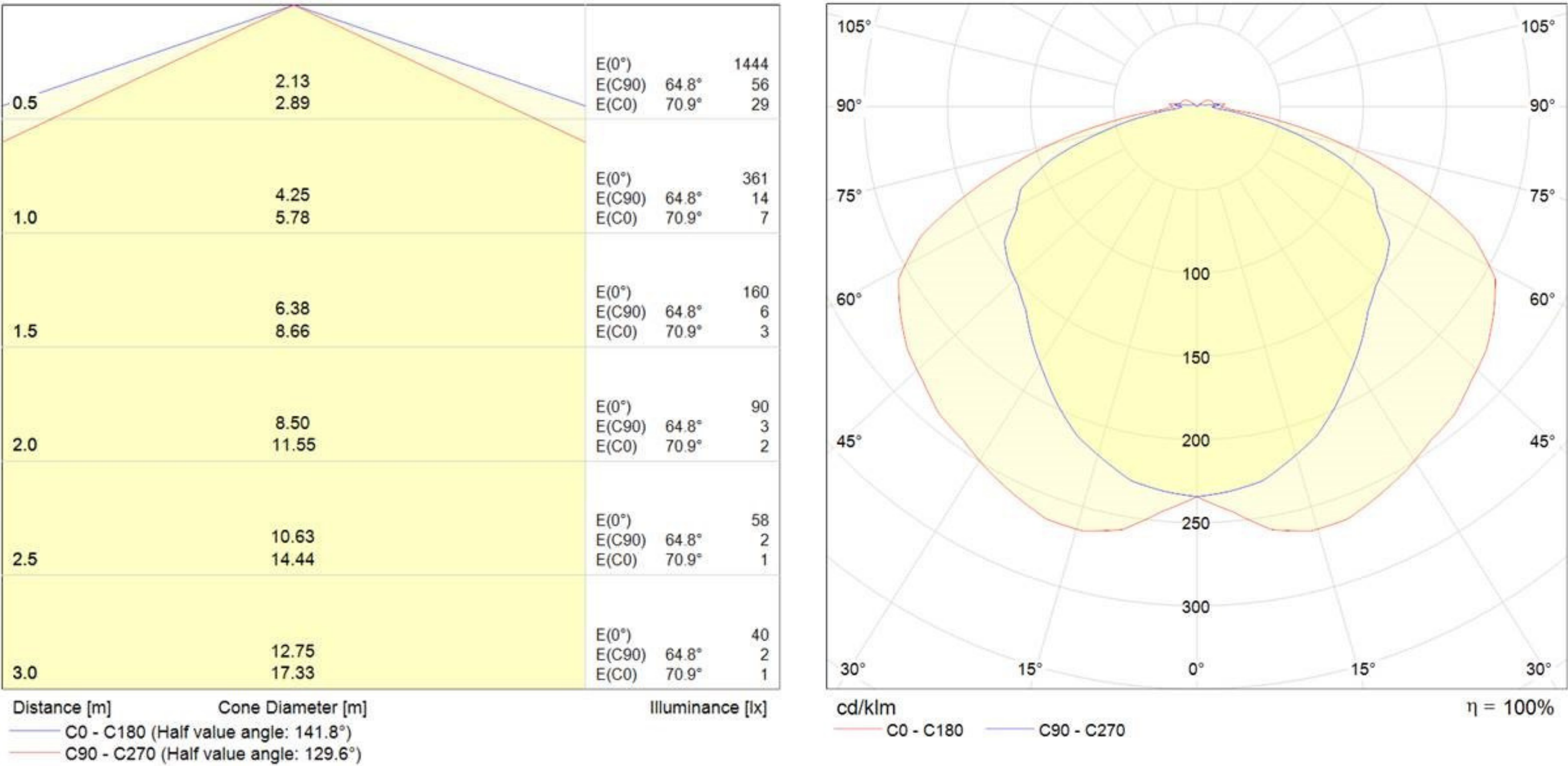
*Supplied in a separate bag. Security screwdriver WS7115 required.

CE BS.EN60598-2-1 IP65

Technical Specifications

LUMINAIRE CHARACTERISTICS	
LEDs	Tridonic CLE G4
DRIVER	Constant current
WORKING TEMP	-25°C to 50°C
EMERGENCY WORKING TEMP	-5°C to 50°C
SYSTEM LUMENS	1540lm
EFFICACY	115.8lm/W
CRI	>80
CCT	4000K
LIFETIME	50,000hrs
IP RATING	IP65
IK RATING	IK10
ELECTRICAL CHARACTERISTICS	
POWER	13.3W
VOLTAGE	25.3 – 28.7V
CURRENT	500mA

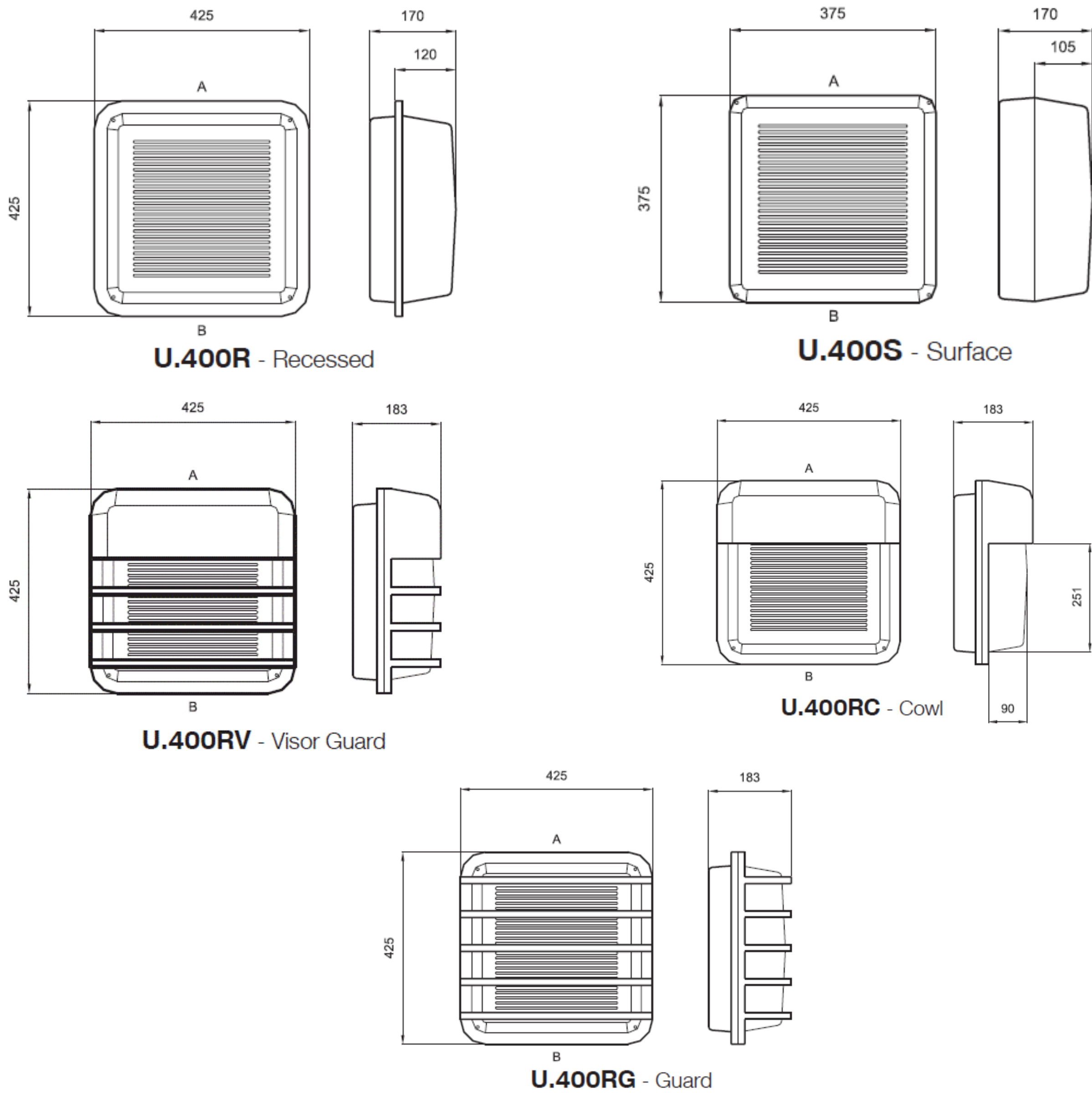
Photometric Data



Ultralux 400 18W LED

Coughtrie

Dimensions (mm)



Sample Order Code

U.400RG-18LED +	EMG	+	CF	/	B	/	OP
Luminaire	Emergency		Sensor		Finish		Diffuser
U.400	Emergency = EMG		Dusk to Dawn = DD Corridor Function = CF CF+Daylight Monitoring = CFDM Microwave = MWD		Black = B Grey = G White = W		Opal = OP Clear = CL

U.400RG-18LED+EMG+CF/B/OP = Recessed Base with Guard 18WLED, Emergency, Corridor Function, Black, Opal Diffuser

CE

BS.EN60598-2-1

IP65