

Custodial

Rail

A stylish, robust linear surface mounted luminaire. The Stelux range is suited to locations where excellent lighting requires a more architectural/ aesthetic scheme. It can therefore be used in custodial and/or industrial applications.

Applications

- Association areas
- Visiting areas
- Corridors
- Ticketing areas
- Offices
- Staircases



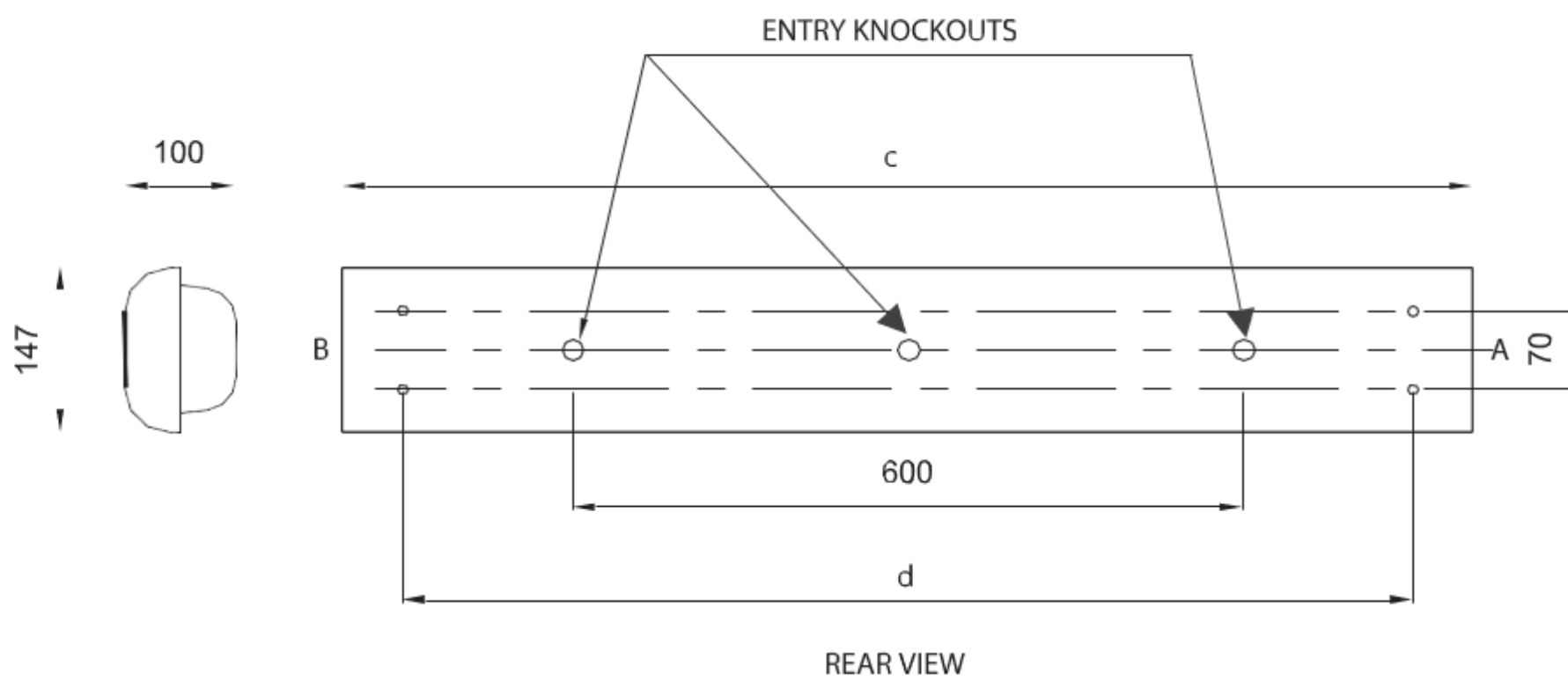
Features

- Casing mild steel, 1.2mm thick degreased and pretreated prior to powder coating
- Quick release hinged gear tray along with diffuser suspension cords allows for quick and easy installation
- A gasket provides seal along all sides
- Clear polycarbonate textured UV stabilised diffuser secured to case by M6 slotted screws or pin head hex security option, complete with suspension links for cover retention
- IP65
- IK10++

Options

- Self-test Module POA
- 3-hour Non-Maintained emergency versions POA
- Dusk to Dawn POA

Dimensions (mm)



Lamp Types

30W LED	XC.150-30WLED
60W LED	XC.150-60WLED

Other LED options available on request

Sample Order Code

XC.150-30WLED	+	EMG	+	MWD	/	B	/	CL
Luminaire		Emergency		Sensor		Finish		Diffuser
XC.150		Emergency = EMG		Dusk to Dawn = DD Corridor Function = CF CF+Daylight Monitoring = CFDM Microwave = MWD		Black = B Grey = G White = W		Clear = CL

XC.150-30WLED+EMG+MWD/B/CL = 30LED, Emergency, Microwave, Black, Clear Diffuser